

Examining access to nutritious country food in a rapidly changing environment through modeling and Inuit knowledge

To do so, we split the project into three smaller questions with the different respective approaches (see inside).



Frédéric
Maps



Tiff-Annie
Kenny



Marie-Hélène
Carignan



Samantha
Farquhar



Olivier S.
Tokpanou



Marianne
Falardeau



Sara
Pedro

And collaborators: C Hoover, B Vuillaume, P Ayotte, J-S Moore, S D Côté, G Duhaime, C Furgal, M Little, J-E Tremblay, P Archambault, M Humphries, W Cheung, M Bailey, M Lemire



Sustainable and resilient country food systems for future generations of Nunavimmiut

Promoting food security while adapting to changing northern environments

This research project builds on a wealth of available data and expertise through collaborations across Nunavik

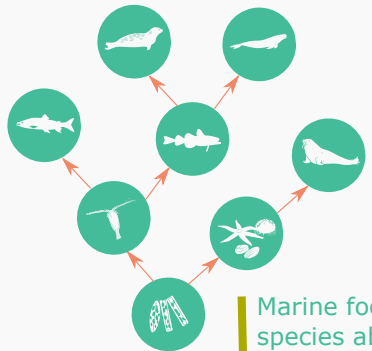
Contact us

frederic.maps@bio.ulaval.ca

tiff-annie.kenny@crchudequebec.ulaval.ca

How much food is there and how nutritious is it?

Assess the availability and quality of country foods, and how climate change may affect them.



Marine food web modeling of species abundances and transfer of essential lipids - building on BriGHT (Sentinel North), FISHERS (Genome Canada), and food security in Qikiqtarjuaq projects



Fish modeling from the rivers to the ocean



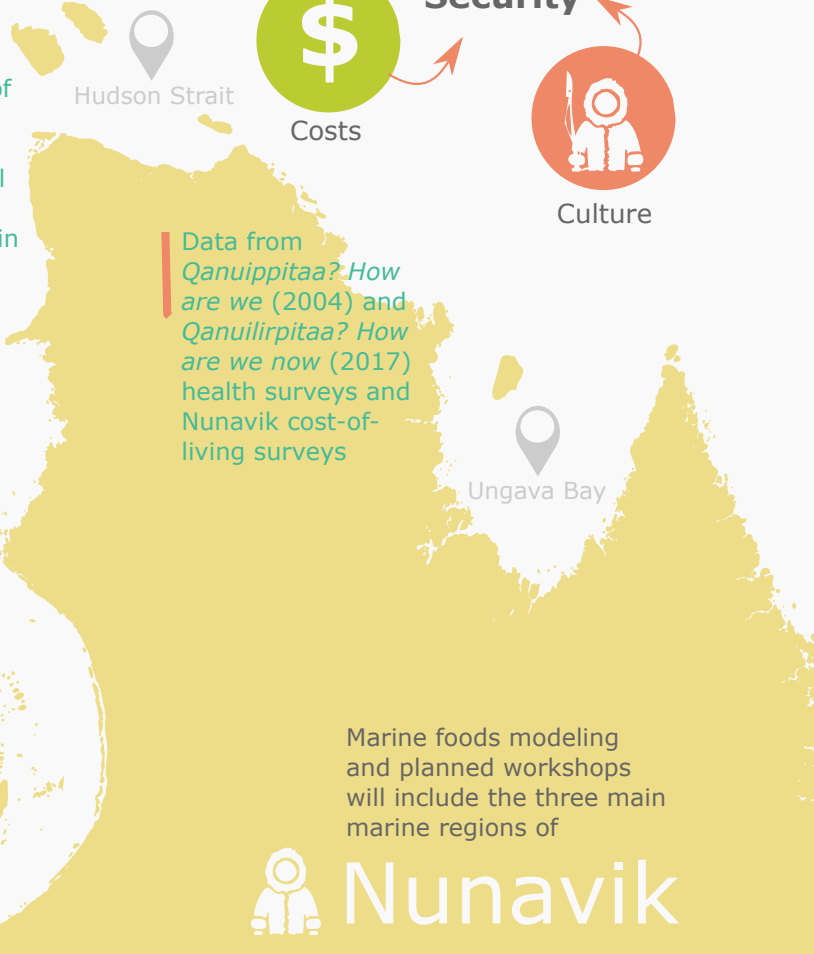
Caribou population modeling - data from Project Caribou Ungava

How accessible is the food?

Link country food availability and quality with socio-economic and cultural components of food security.



Data from *Qanuippitaa? How are we (2004)* and *Qanuilirpitaa? How are we now (2017)* health surveys and Nunavik cost-of-living surveys



Marine foods modeling and planned workshops will include the three main marine regions of



Nunavik

Will there be enough food in the future and how can we adapt?

Work with Nunavik community partners to co-develop scenarios of change and adaptation strategies to promote sustainable harvest, food security, and health.



Integrate Inuit knowledge, perspectives, and priorities with results from the previous two questions to define a common vision of Arctic ecosystems and food security



Participatory research during community workshops to co-construct future scenarios and new strategies to inform community adaptation plans

Glossary

Food security: according to the United Nations, a food secure community is a community that has access to enough, nutritional, and safe (not contaminated) food, that is culturally preferred.

Model: a mathematical equation, a picture, or a graph that represents a network (such as a food web) and how its components (such as species and humans) interact with each other.

Scenario: a specific possibility. A model scenario can be a possible new arrangement of a network.

Participatory research: includes research designs, methods and frameworks that are accessible to be used in collaboration with those affected by an issue being studied for the purpose of action.

የጥናት ማኅበራዊ ማሳሰቢያ
 ማኅበራዊ ማሳሰቢያ ለጥናት ማኅበራዊ
 ማሳሰቢያ ማኅበራዊ ማሳሰቢያ
 ማኅበራዊ ማሳሰቢያ ማኅበራዊ ማሳሰቢያ
 ማኅበራዊ ማሳሰቢያ ማኅበራዊ ማሳሰቢያ

ጥናት ማኅበራዊ ማሳሰቢያ ማኅበራዊ ማሳሰቢያ
 ማኅበራዊ ማሳሰቢያ ማኅበራዊ ማሳሰቢያ
 ማኅበራዊ ማሳሰቢያ ማኅበራዊ ማሳሰቢያ



Frédéric
Maps



Tiff-Annie
Kenny



Marie-Hélène
Carignan



Samantha
Farquhar



Olivier S.
Tokpanou



Marianne
Falardeau



Sara
Pedro

ጥናት ማኅበራዊ ማሳሰቢያ ማኅበራዊ ማሳሰቢያ
 ማኅበራዊ ማሳሰቢያ ማኅበራዊ ማሳሰቢያ
 ማኅበራዊ ማሳሰቢያ ማኅበራዊ ማሳሰቢያ



ጥናት ማኅበራዊ ማሳሰቢያ
 frederic.maps@bio.ulaval.ca
 tiff-annie.kenny@crchudequebec.ulaval.ca



ጥናት ማኅበራዊ ማሳሰቢያ ማኅበራዊ ማሳሰቢያ
 ማኅበራዊ ማሳሰቢያ ማኅበራዊ ማሳሰቢያ
 ማኅበራዊ ማሳሰቢያ ማኅበራዊ ማሳሰቢያ

ጥናት ማኅበራዊ ማሳሰቢያ ማኅበራዊ ማሳሰቢያ
 ማኅበራዊ ማሳሰቢያ ማኅበራዊ ማሳሰቢያ
 ማኅበራዊ ማሳሰቢያ ማኅበራዊ ማሳሰቢያ

